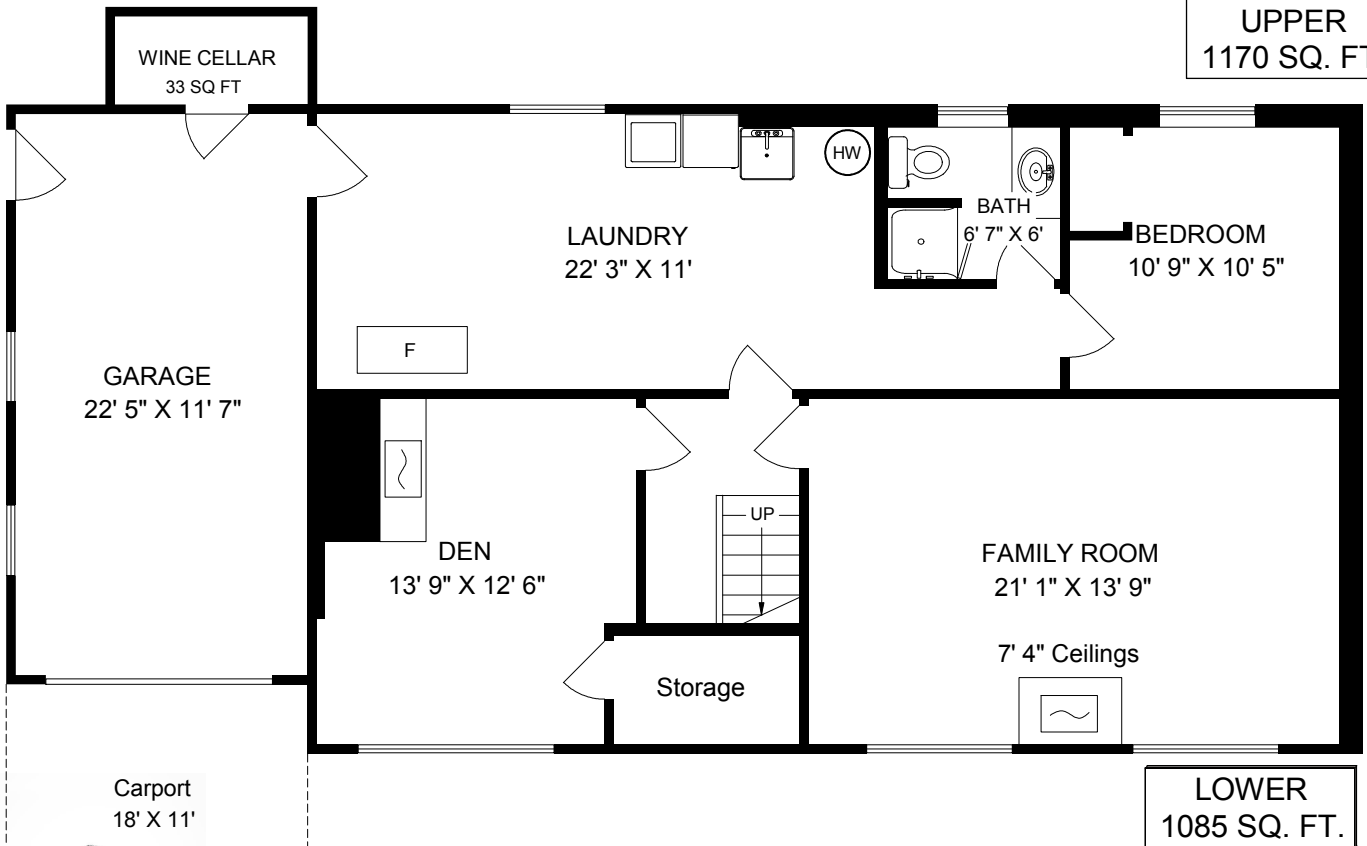
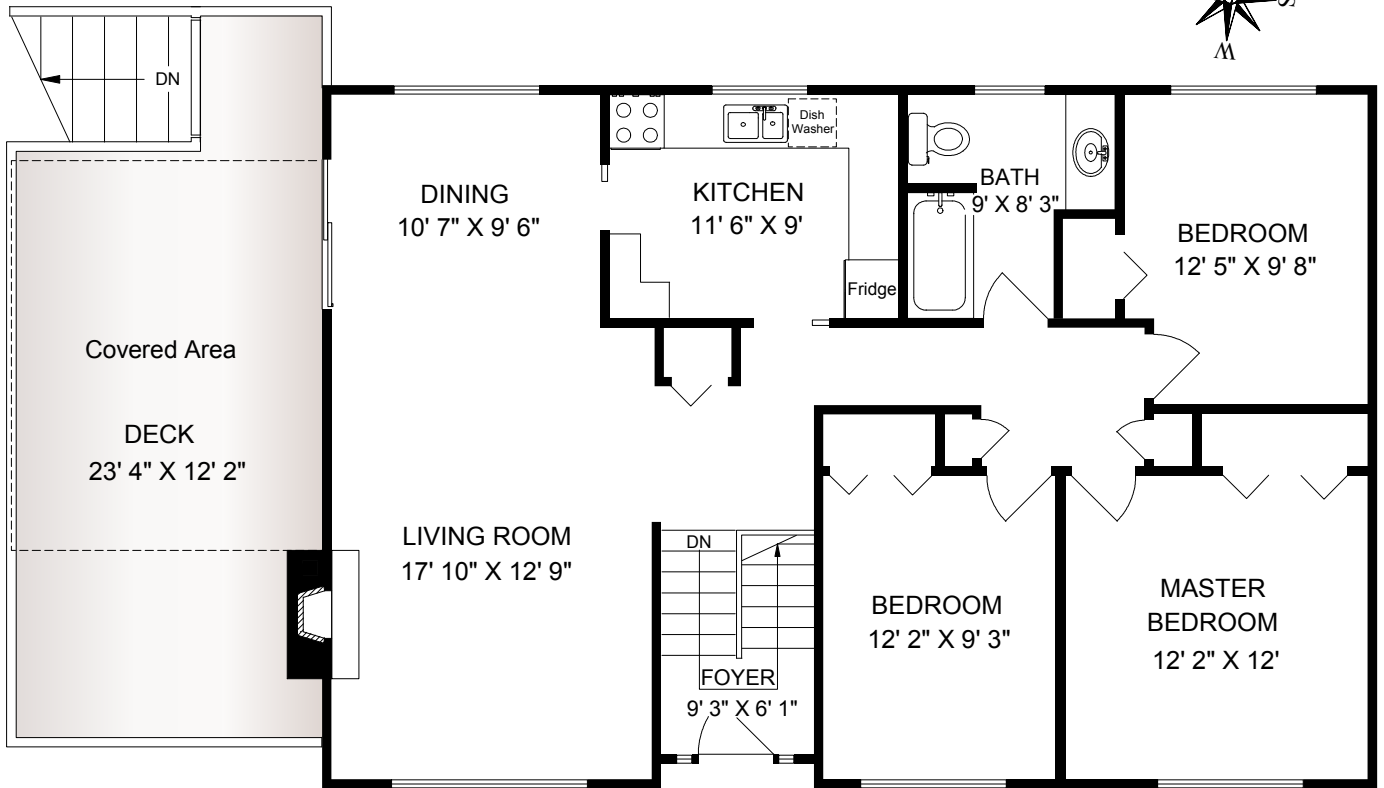
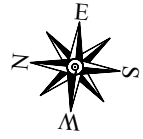


4219 SHELBOURNE STREET



	FINISH SQ. FT.	UNFINISH SQ. FT.	TOTAL SQ. FT.
UPPER	1170		1170
LOWER	1085		1085
TOTAL	2255		2255
GARAGE		277	277
DECK		304	304

EXCLUSIVELY FOR PAT MEADOWS
OF ROYAL LEPAGE COAST CAPITAL REALTY

JUNE 23 2016

REF # 4866

Island Measure
Residential and Commercial Floor Plans

250-818-8273 islandmeasure.com

Measurements may not be 100% accurate. Floor plans are for provided for convenience only. Prospective buyers must satisfy themselves to the status of any space specifically in relation to minimum ceiling heights for habitable rooms required by the BC building code.