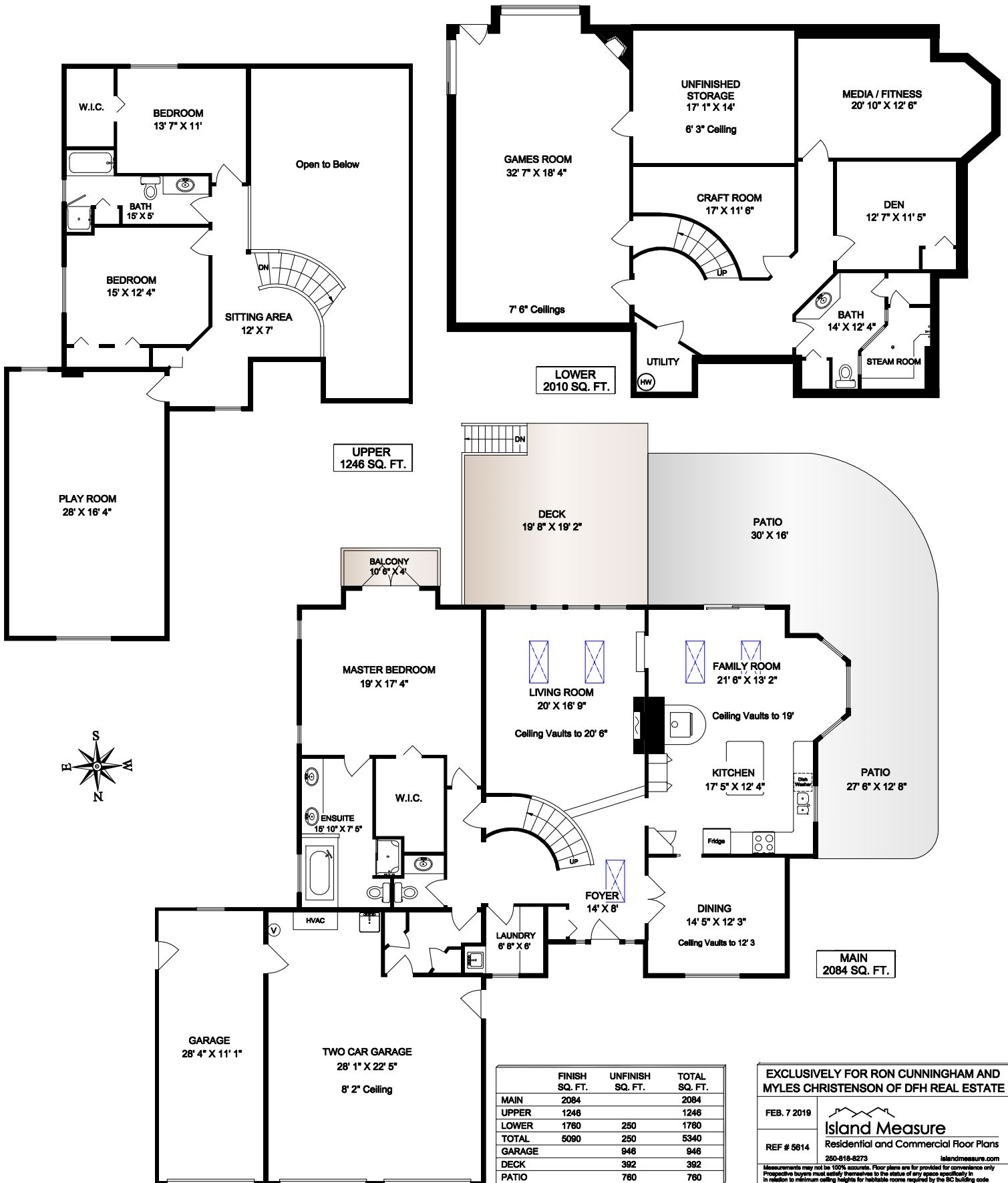


1111 HILLGROVE ROAD



LOWER
2010 SQ. FT.

UPPER
1246 SQ. FT.

MAIN
2084 SQ. FT.

	FINISH SQ. FT.	UNFINISH SQ. FT.	TOTAL SQ. FT.
MAIN	2084		2084
UPPER	1246		1246
LOWER	1760	250	1760
TOTAL	5090	250	5340
GARAGE		946	946
DECK		392	392
PATIO		760	760

EXCLUSIVELY FOR RON CUNNINGHAM AND
MYLES CHRISTENSON OF DFH REAL ESTATE

FEB. 7 2019

REF # 5614

Island Measure
Residential and Commercial Floor Plans

250-618-8273 islandmeasure.com

Measurements may not be 100% accurate. Floor plans are provided for convenience only. Prospective buyers must verify themselves to the status of any space specifically in relation to minimum ceiling heights for habitable rooms required by the BC building code.