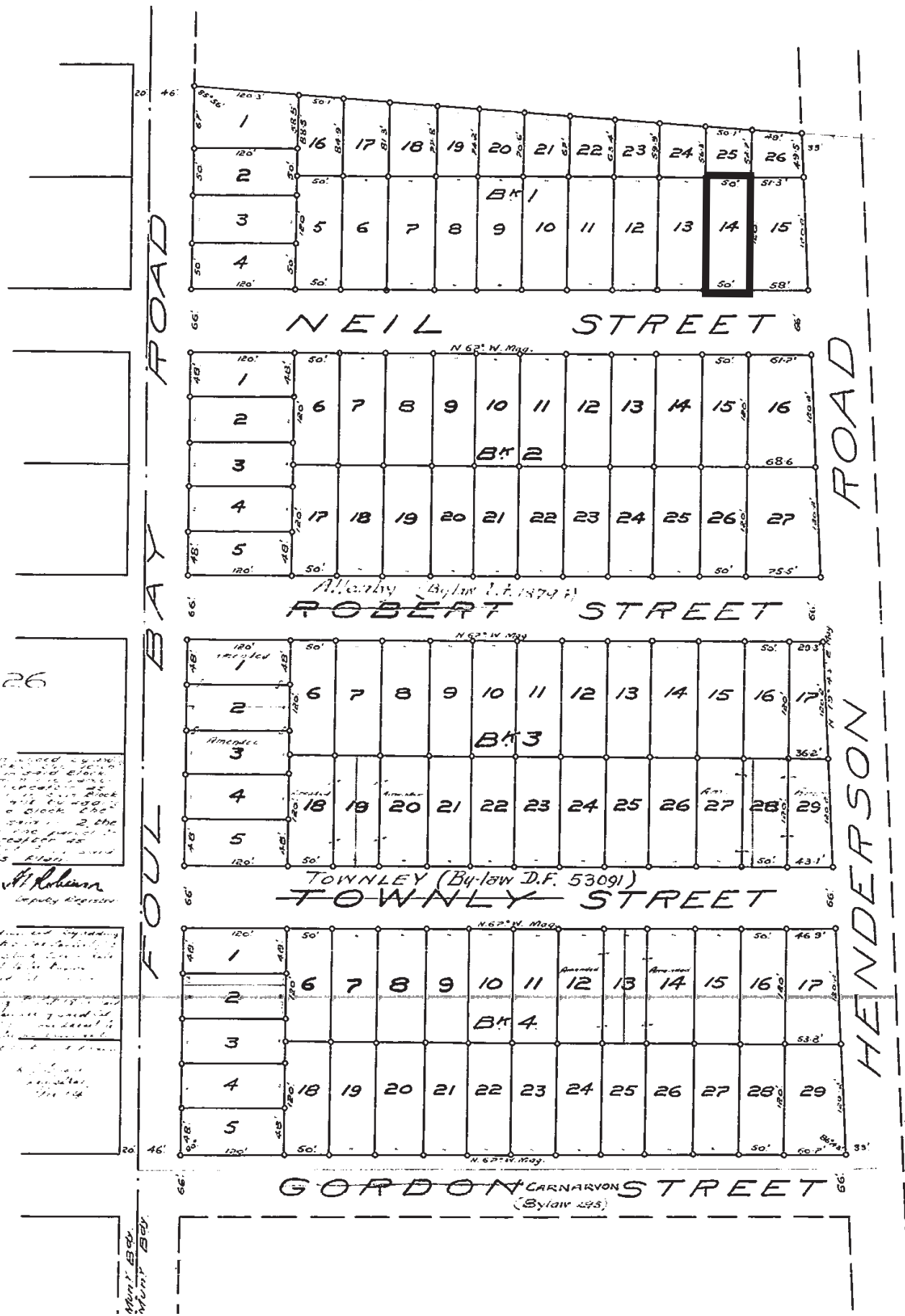


PLAN

OF SUBDIVISION OF PART OF
SECTION 28
VICTORIA DIST. B.C.



26

Approved by the
Victoria City Council
on the 15th day of
April 1900.
The Mayor
The City Engineer
The City Clerk
The City Treasurer
The City Assessor
The City Surveyor
The City Inspector
The City Engineer
The City Clerk
The City Treasurer
The City Assessor
The City Surveyor
The City Inspector

A. Robinson
Deputy Registrar

Approved by the
Victoria City Council
on the 15th day of
April 1900.
The Mayor
The City Engineer
The City Clerk
The City Treasurer
The City Assessor
The City Surveyor
The City Inspector

A. Robinson
Deputy Registrar

Plan 1348
Municipal