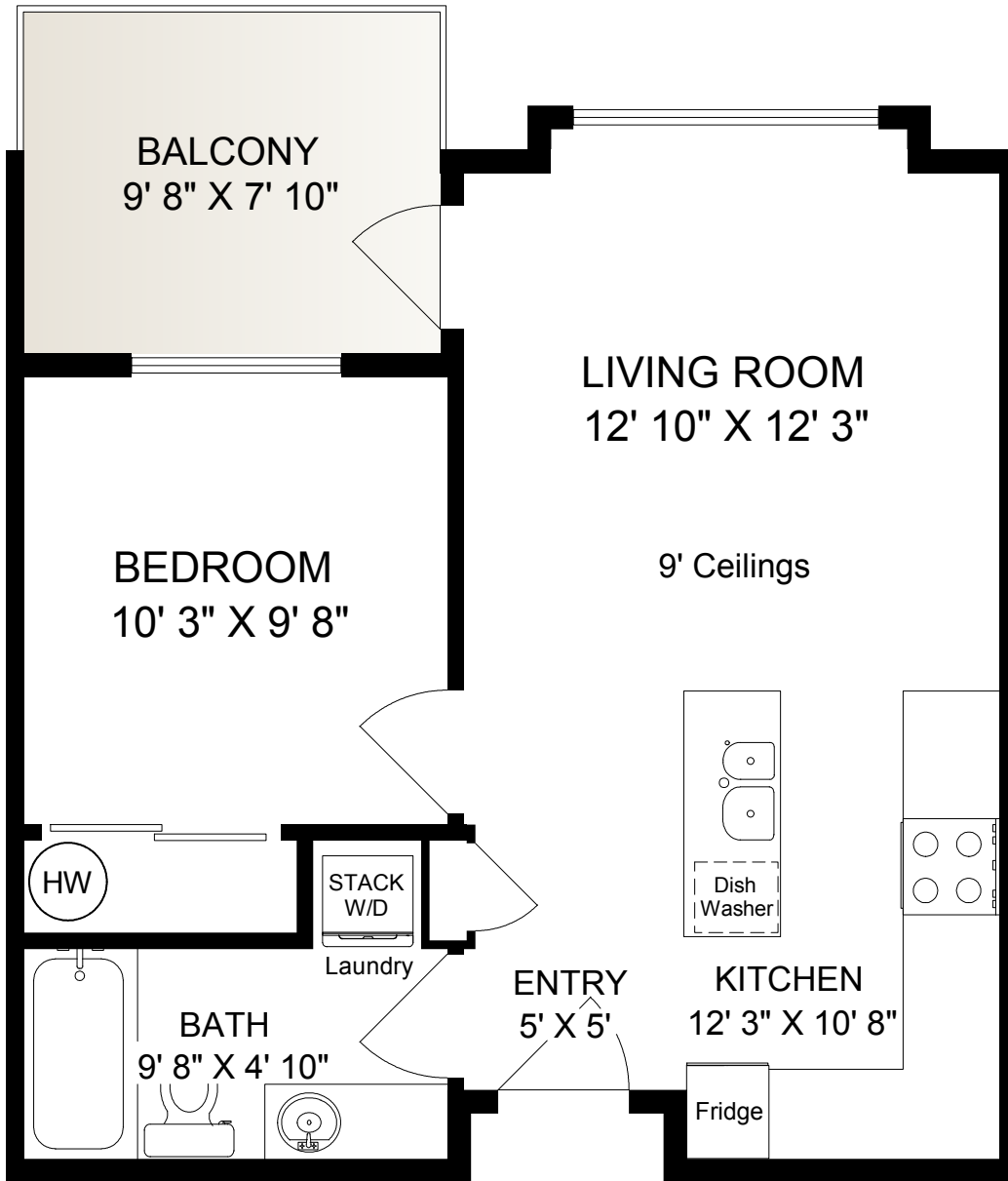
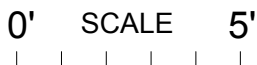
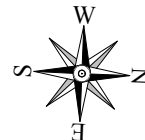



306-4030 BORDEN STREET



MAIN
502 SQ. FT.



| | FINISH SQ. FT. | UNFINISH SQ. FT. | TOTAL SQ. FT. |
|-------|-------------------|---------------------|------------------|
| MAIN | 505 | | 505 |
| TOTAL | 505 | | 505 |
| TOTAL | | 76 | 76 |

| | |
|--|---|
| EXCLUSIVELY FOR GARY BAZUIK OF PEMBERTON HOLMES | |
| JUNE 9 2017 |  Island Measure |
| REF # 5117 | Residential and Commercial Floor Plans 250-818-8273 islandmeasure.com |
| <small>Measurements may not be 100% accurate. Floor plans are provided for convenience only. Prospective buyers must satisfy themselves to the status of any space specifically in relation to minimum ceiling heights for habitable rooms required by the BC building code.</small> | |