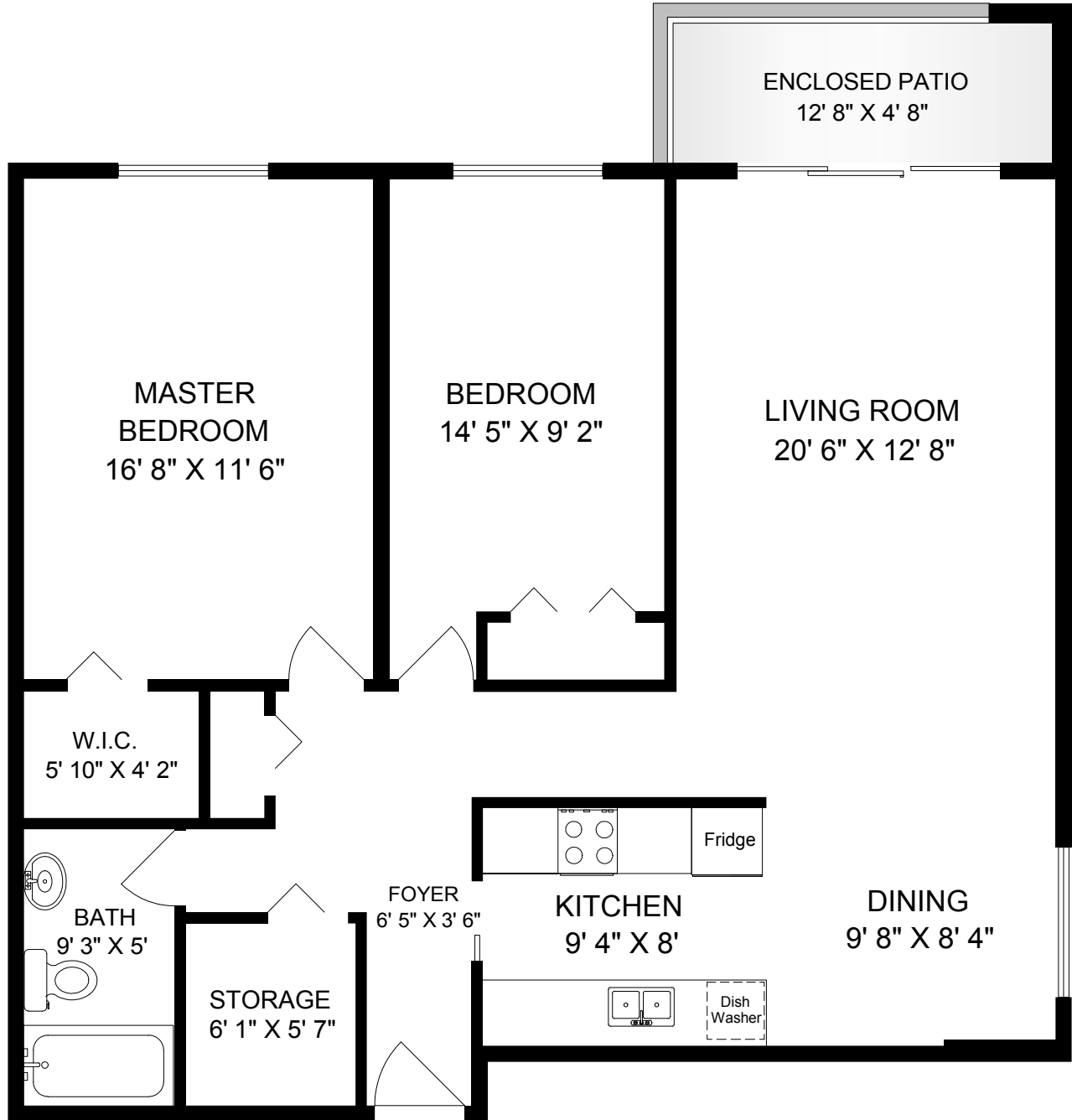


107-25 GOVERNMENT STREET



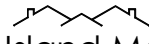
MAIN
1162 SQ. FT.



0' SCALE 5'

	FINISH SQ. FT.	UNFINISH SQ. FT.	TOTAL SQ. FT.
MAIN	1162		1162
TOTAL	1162		1162

**EXCLUSIVELY FOR GARY BAZUIK
OF PEMBERTON HOLMES**

May 29 2017	 Island Measure Residential and Commercial Floor Plans 250-818-8273 islandmeasure.com
REF # 5096	

Measurements may not be 100% accurate. Floor plans are provided for convenience only. Prospective buyers must satisfy themselves to the status of any space specifically in relation to minimum ceiling heights for habitable rooms required by the BC building code.