



250-744-1537

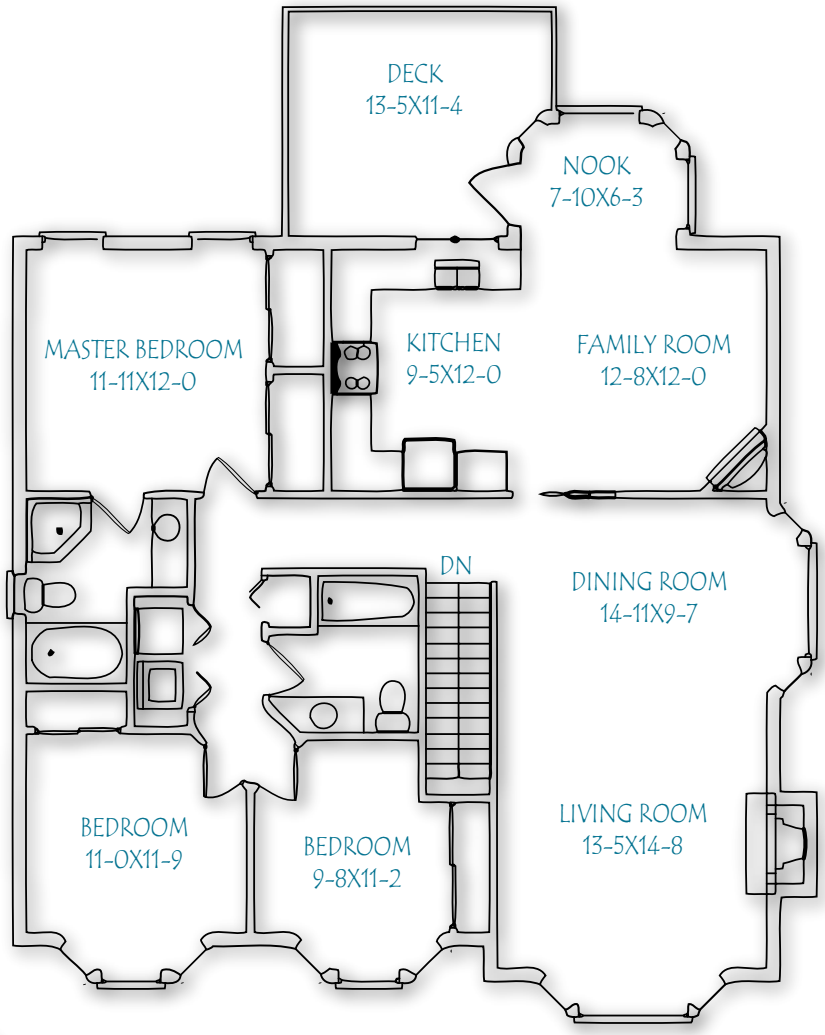
floorplan@homelands.ca

Prepared for the exclusive use of
Diana Devlin - Realtor

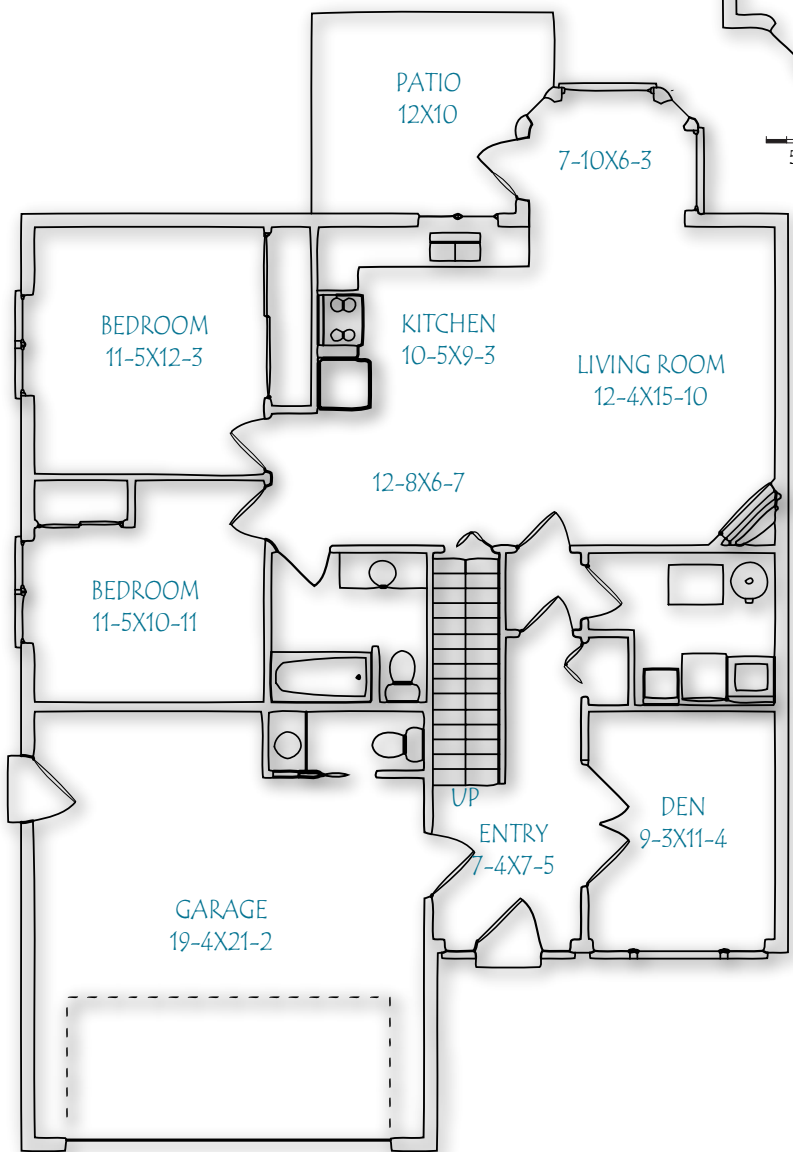
1159 Lucille Drive

Victoria, BC
February 2, 2012

Measurements and Square Footage are
approximate. Buyer to verify on-site



MAIN FLOOR



LOWER FLOOR

SQUARE FOOTAGE
MAIN FINISHED: 1483
LOWER FINISHED: 1242
TOTAL FINISHED: 2725
GARAGE: 417
DECKS / PATIOS: 252
OVERALL TOTAL: 3394