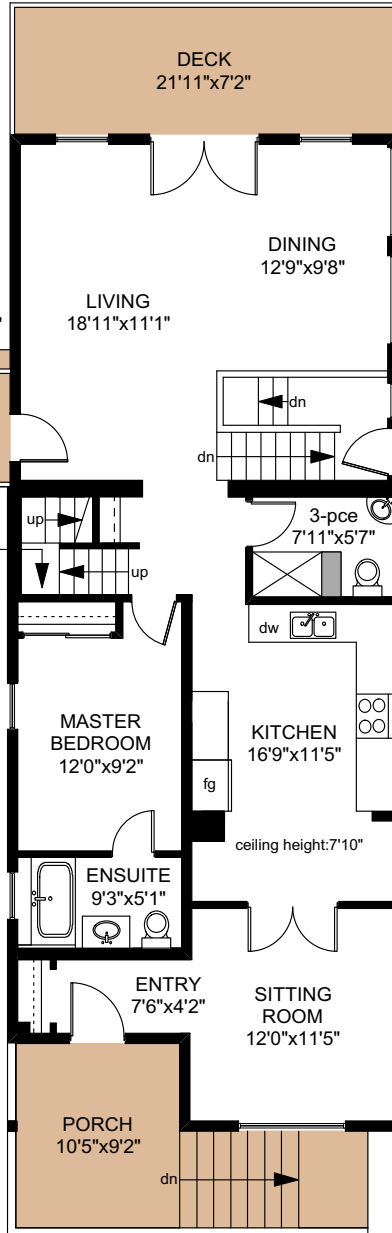
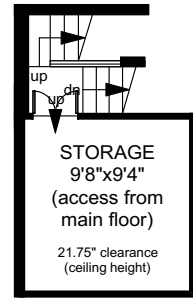
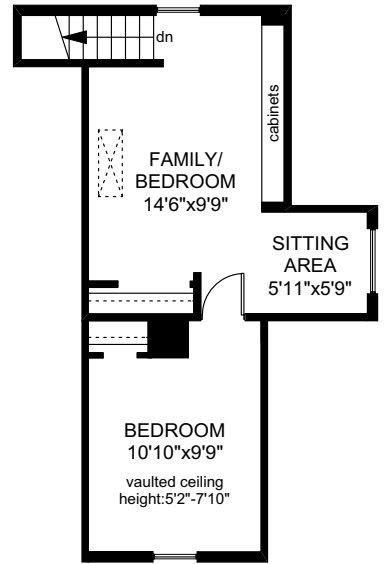


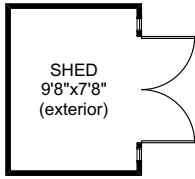
370 OBED AVENUE

UPPER FLOOR
398 SQ.FT

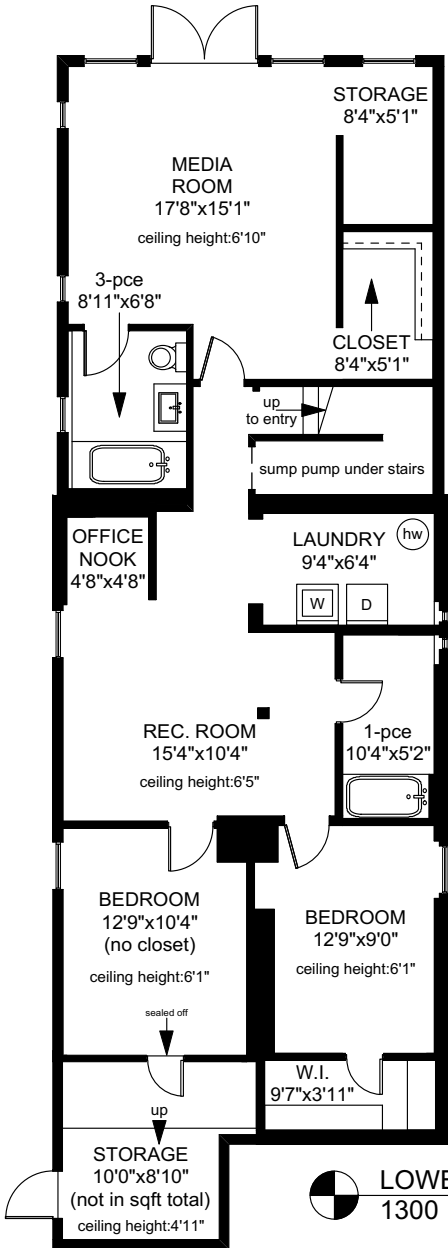


MAIN FLOOR
1202 SQ.FT

(sheds not shown in exact location)

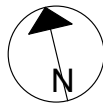


SHED
6'0"x4'1"
(exterior)



LOWER FLOOR
1300 SQ.FT

	FINISHED SQ. FT.	UNFINISHED SQ. FT.	TOTAL SQ. FT.
MAIN	1202	0	1202
UPPER	398	0	398
LOWER	1300	0	1300
TOTAL	2900	0	2900
STORAGE	0	213	213
SHEDS	0	99	99
DECKS	0	194	194
PORCH	0	95	95



0' 5' 10'

PREPARED FOR THE EXCLUSIVE USE OF
DAVE PHILPS OF DFH REAL ESTATE

MEASURED ON: 09/07/18
DRAWING FILE: 17272

Tafemeasure VICTORIA, B.C.
Ph. 883.8894
www.tafemeasure.com