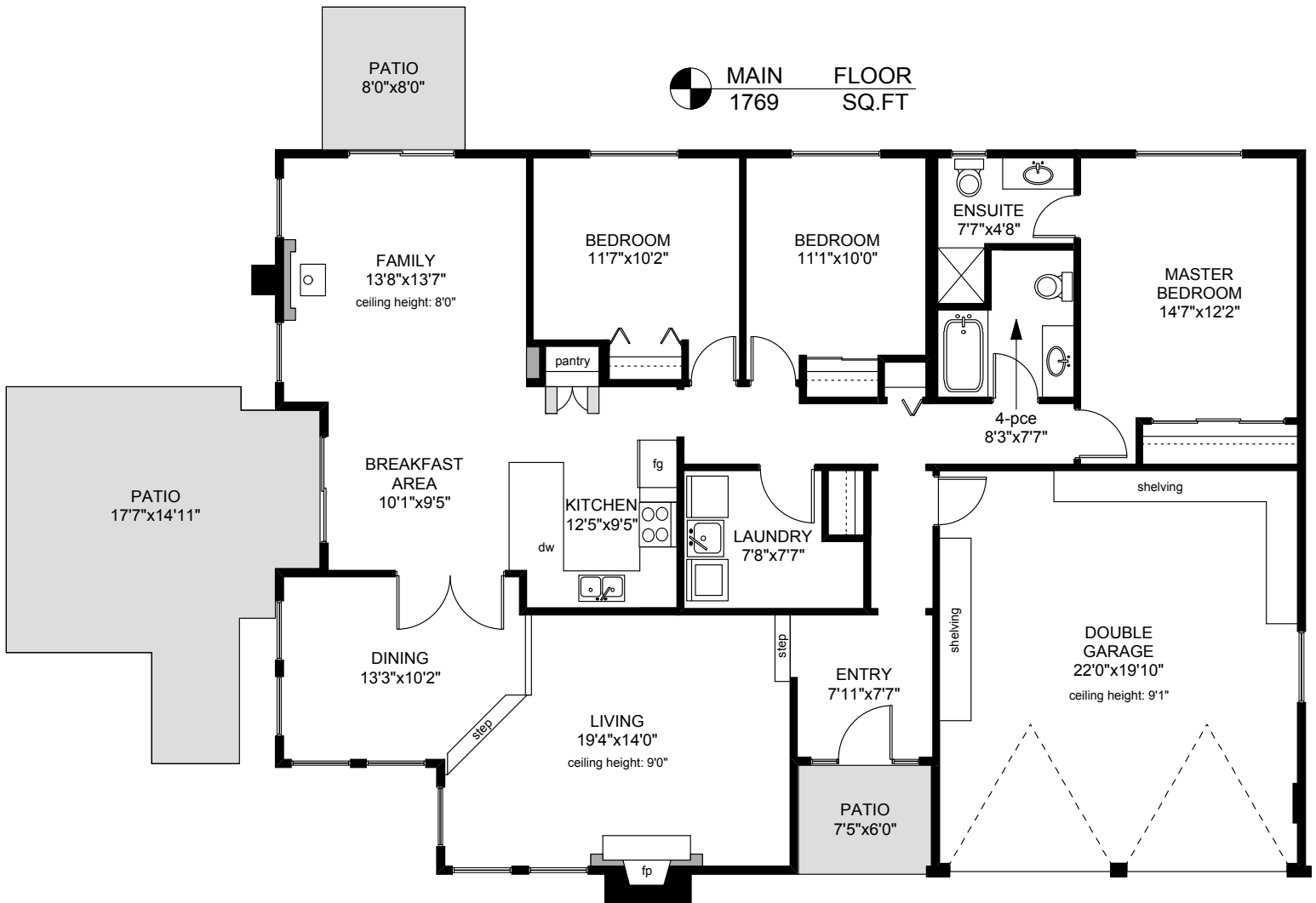
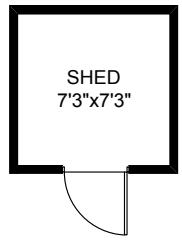
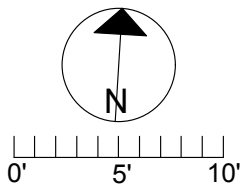


3341 ST. TROY PLACE



	FINISHED SQ. FT.	UNFINISHED SQ. FT.	TOTAL SQ. FT.
MAIN	1769	0	1769
TOTAL	1769	0	1769
GARAGE	0	471	471
PATIOS	0	382	382
SHED	0	64	64



PREPARED FOR THE EXCLUSIVE USE OF
APRIL PRINZ OF RE/MAX CAMOSUN

MEASURED ON: 03/28/13
DRAWING FILE: 10993

Tafe Measure VICTORIA, B.C.
Ph. 883.8894
www.tafemeasure.com