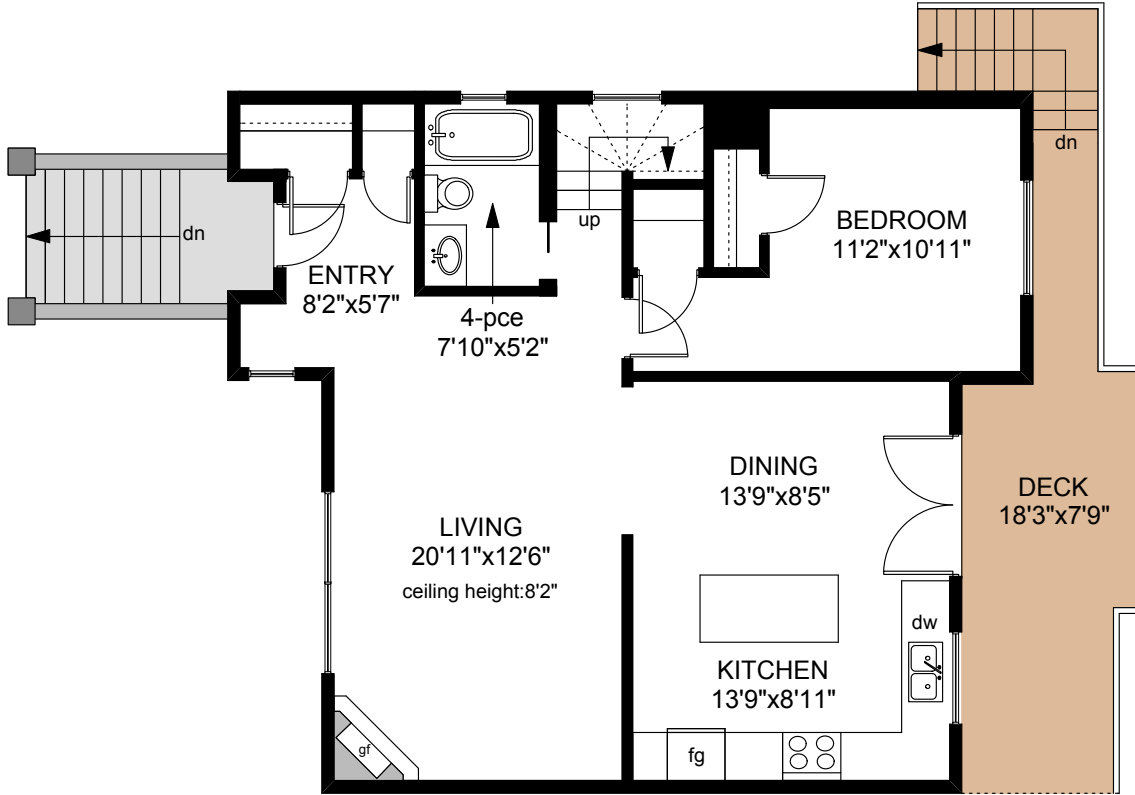
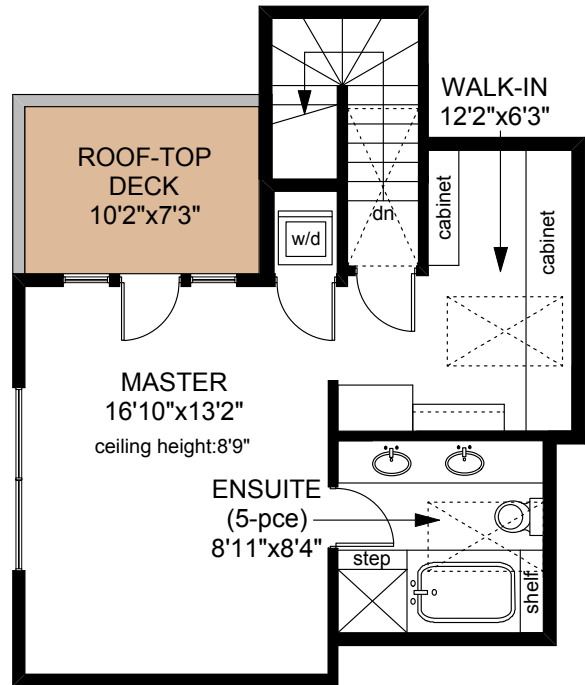


601 MOSS STREET

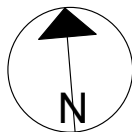


MAIN FLOOR
883 SQ.FT



UPPER FLOOR
527 SQ.FT

	FINISHED SQ. FT.	UNFINISHED SQ. FT.	TOTAL SQ. FT.
MAIN	883	0	883
UPPER	527	0	527
TOTAL	1410	0	1410
DECKS	0	238	238



PREPARED FOR THE EXCLUSIVE USE OF
APRIL PRINZ OF RE/MAX CAMOSUN

MEASURED ON: 05/13/13
DRAWING FILE: 11122

Tafe Measure VICTORIA, B.C.
Ph. 883.8894
www.tafemeasure.com